

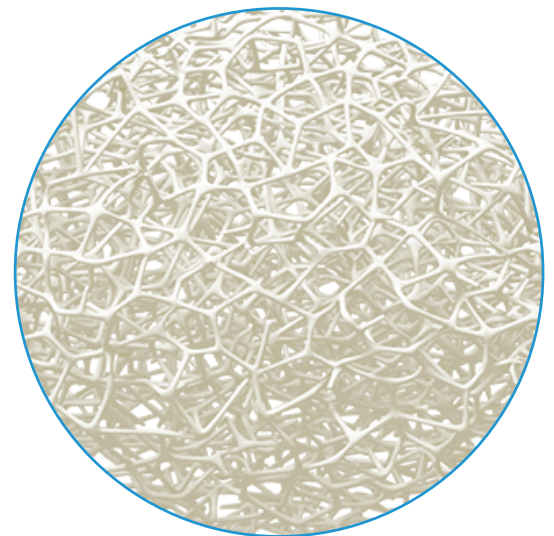
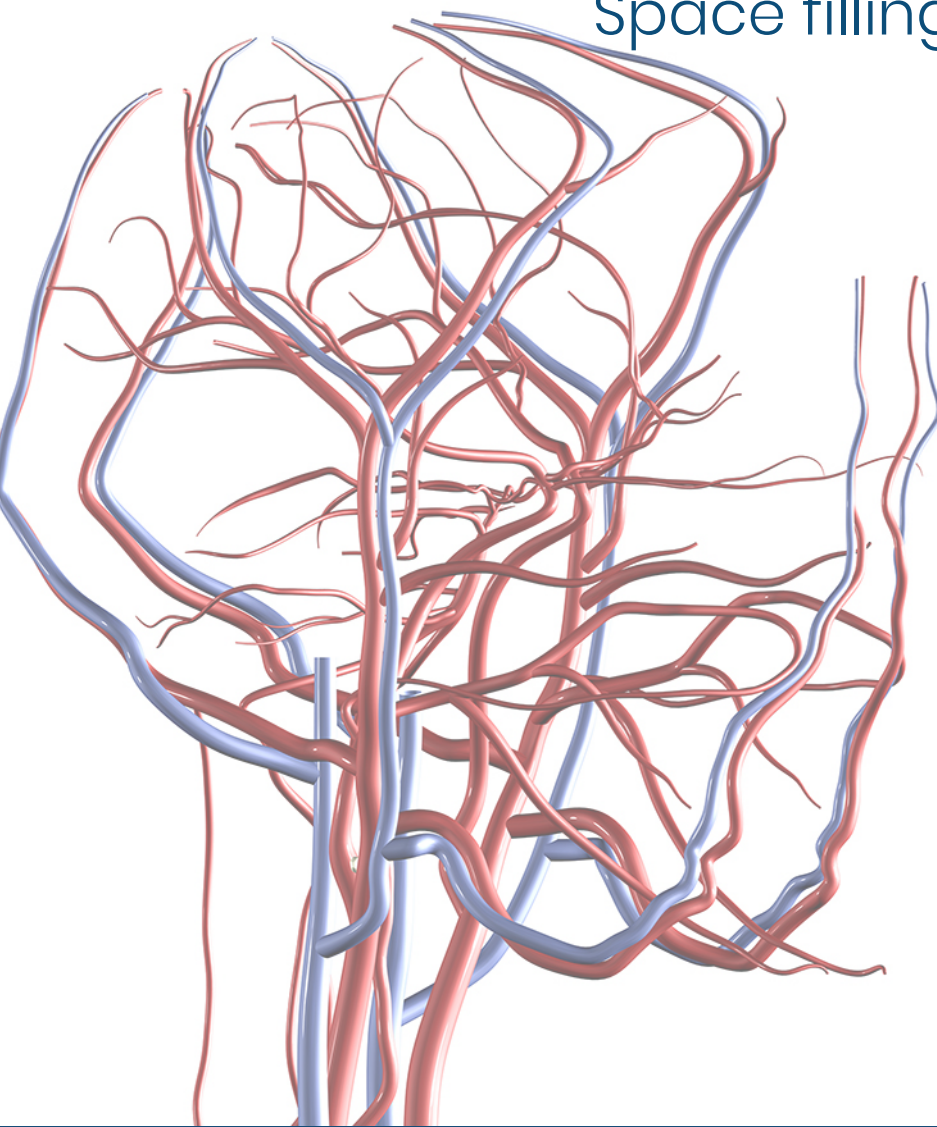
Trellix[®] Embolic Coils Neurovascular

With Shape Memory Polymer Technology

High embolic material volume
Space filling with low radial force

Accelerated healing[†]

Minimal artifact



Shape memory polymer
porous embolic scaffold

TrelliX Embolic Coils



Crimped for catheter delivery



Self-expands on contact with blood

Porous embolic scaffold supports rapid formation of small interconnected clots

Rapid conversion to organized thrombus, followed by collagen deposition - without chronic active inflammation[‡]

High embolic material volume and packing density

Polymer has no imaging artifact, facilitating follow-up imaging

Dimensions & Details

Part Number	Diameter (mm)	Length LL (cm)							
		02	04	06	08	10	12	15	20
TCF-18-03-LL	3	●	●	●	●	●			
TCF-18-04-LL	4			●	●	●	●		
TCF-18-05-LL	5			●	●	●		●	
TCF-18-06-LL	6				●	●		●	●
TCF-18-07-LL	7						●	●	●
TCF-18-08-LL	8							●	●
TCF-18-09-LL	9							●	●
TCF-18-10-LL	10							●	●
TCF-18-11-LL	11								●
TCF-18-12-LL	12								●
TCF-18-14-LL	14								●
TCF-18-16-LL	16								●
TDC-1	TrelliX Detachment Controller (5-pack)*								

Coils are compatible with standard .021" microcatheters. Shape memory polymer self-expands to .035" diameter in vessel. *Electrolytic detachment mechanism, single-use disposable.

INDICATION: The Trellix Embolic Coil System is intended to obstruct or occlude blood flow in vascular abnormalities of the neurovascular and peripheral vessels. Indications include: Intracranial aneurysms, other neurovascular abnormalities such as arteriovenous malformations and arteriovenous fistulae, arterial and venous embolizations in the peripheral vasculature.

INDICATION: The Trellix Detachment Controller System is intended for use with the Trellix Embolic Coil System which is intended to obstruct or occlude blood flow in vascular abnormalities of the neurovascular and peripheral vessels. Indications include: Intracranial aneurysms, other neurovascular abnormalities such as arteriovenous malformations and arteriovenous fistulae, arterial and venous embolizations in the peripheral vasculature.

Indications, contraindications, warnings, and instructions for use can be found in the product labeling supplied with each device.

[‡] Preclinical data on file. **Patent:** www.shapemem.com/patents



807 Aldo Avenue, Suite 109, Santa Clara, CA 95054 USA

+1.408.649.5175 | info@shapemem.com | www.shapemem.com

LIT011 Rev A